

2 Children and young people in Warrington

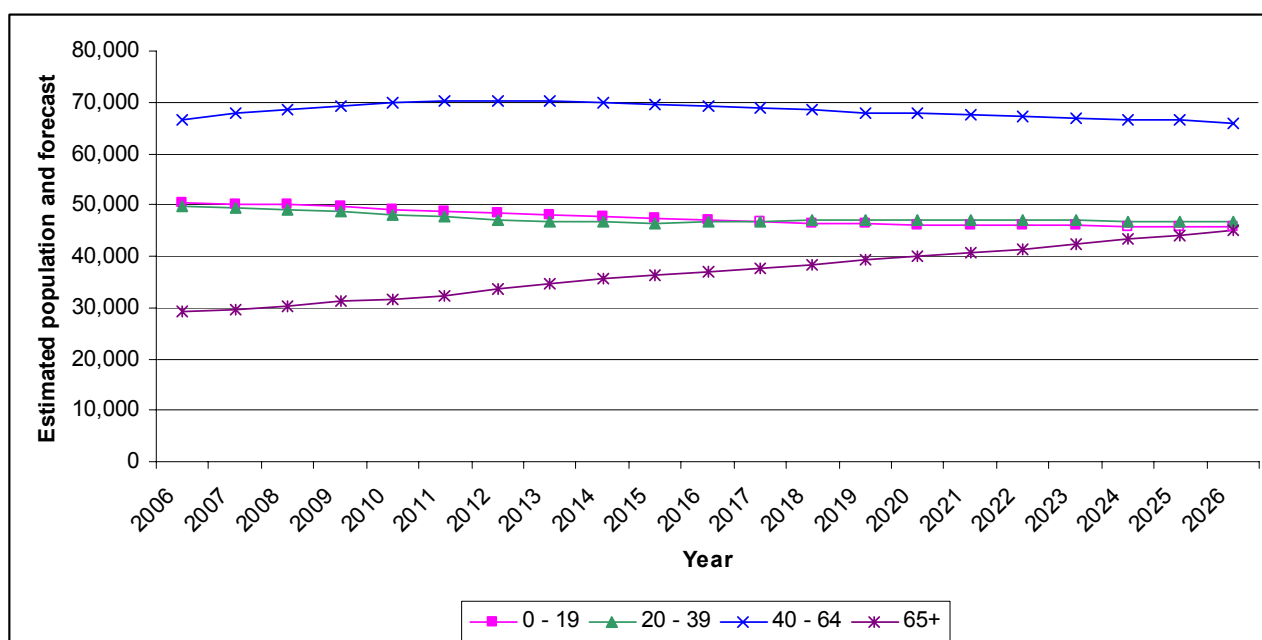
The borough of Warrington covers 182 square kilometres and lies at the centre of the North West region's communications network. In a total population of 195,200 living in 85,000 households², 48,200 (24.6%)³ are children and young people aged 0 -19. 6.2% of children and young people are of ethnic minority origin⁴.

In January 2009, there were 31,200 pupils attending schools in Warrington. On any given day, there are

- around 6,200 children with special educational needs (SEN) of whom 5,900 (95%) are in mainstream schools
- 230 and young people are looked after and
- 90 have a Child Protection Plan.

Warrington is a borough of contrasts having rural villages together with industrial heritage and landscapes. The town of Warrington in the centre of the borough is the largest and most densely populated, with outlying villages such as Lymm, Culcheth and Burtonwood having their own range of shops and services. The population has risen rapidly over the last 30 years with the development of the new town. Current population forecasts suggest that the overall population will grow by 3% by 2026, particularly for the 65+ age group, but that during the same period the number of children and young people in the borough is forecast to fall by 8%.

Figure 1: Population estimates and forecasts 2006 to 2026 by age groups (Persons)⁵



² Registrar General Midyear estimates 2007, National Statistics

³ Registrar General Midyear Estimates 2007, National Statistics

⁴ School Census 2008

⁵ 2006 - Registrar General Mid Year Estimates, www.statistics.gov.uk, Crown Copyright material reproduced with permission of the Controller of HMSO. 2011 onwards – Warrington Population Forecasts, Cheshire County Council Research and Intelligence Unit, produced on behalf of Warrington Borough Council under demographic agreement.

3 Warrington's response to the Lord Laming Report

In March 2009, the Lord Laming published his report into how children's services have progressed since 2004. His report, commissioned by the Children's Secretary, Ed Balls, in November 2008 following the death of Baby P in Haringey, looks at children's services across England.

His report recognised that Every Child Matters is the right framework for safeguarding children, but that more must be done to ensure that it is implemented in practice to provide the best quality care and protection for every child. His report calls on Central Government to set explicit priorities for the protection of children and young people and to ensure that sufficient resources are in place to deliver these priorities, but also recommends a number of changes that need to be made at a local and regional level in order to support and facilitate effective child protection.

In Warrington, safeguarding is good. The Warrington Safeguarding Children Board (WSCB) which was established in February 2006 has the lead responsibility for safeguarding the children and young people of Warrington. The functions of the WSCB are developed through its subgroups for example, policy practice and quality assurance, training and development, performance monitoring, and child death and serious case review panels. Children's safeguarding, together with the police, education and health professionals investigate when reports are received that children may be suffering from harm or in need of protection. All children and young people who have a child protection plan have a named social worker. Plans are currently being made to appoint an Independent Chair of the Local Safeguarding Children's Board.

The policy practice and quality assurance subgroup of the WSCB are currently awaiting each agencies responses to the recommendations in the Laming report and will develop a plan in response to this work in the next year.

There is strong partnership working, some examples of which are in areas such as domestic violence, the Multi Agency Risk Assessment Conference (MARAC), support for children who run away from home and in the training of all staff and volunteers working with children and young people. However, we are not complacent, and we want to improve our safeguarding further. For example, we have recently completed an internal safeguarding audit in social care and the NSPCC has audited a number of family support cases.

We welcome the Lord Laming's report and have already developed a number of actions linked to the recommendations that are specific to Warrington. These have informed the priorities within this Plan and are detailed in the Stay Safe section.

4 Priorities for 2009-2011

Warrington's Children and Young People's Trust has developed this Plan and its priorities by bringing together and considering a strong evidence base. The views of children, young people, their families and those professionals working with them have been included. Together with statistical data gathered throughout the life of the first Children and Young People's Plan and particularly over the past year.

Three common strategic intentions emerged, and are the focus of the Plan. They are:

- eradicating child poverty
- narrowing the gap, and
- raising aspirations/promoting success.

From these three main strategic intentions, a number of individual priorities were then developed. Driven by the outcome groups of the Trust, these priorities drew on the evidence base referred to above and were subsequently consulted upon. The consultation, which was open to anyone who wished to comment, received responses from children and young people, families and carers, and people who work with them. The priorities were further refined to ensure they accurately reflected the needs of children and young people in Warrington.

a) **Be Healthy**

The health of children and young people in Warrington is generally good. Most of the key indicators, such as infant mortality rates, immunisation rates, obesity levels, oral health, teenage conceptions and breastfeeding rates, continue to be close to or better than the national average. However, whilst overall levels of health are good, there are differences in health outcomes in different parts of the borough with particular differences seen between the inner and outer wards.

The focus of the 2006 – 2009 CYPP was on reducing inequalities, with a specific focus on levels of smoking among mothers-to-be and young people, reducing teenage conceptions and improving breastfeeding uptake. Mothers who stated that they were still smoking at the time of their baby's birth fell from 18.5% to 16.3% and breastfeeding initiation also showed a steady increase over the same period from 57% to 59%. There was improved access to alcohol and substance misuse and Speech and Language Therapy services. Since 2006 waiting times for Speech and Language appointments have been reduced from approximately 12 months to six weeks.

Childhood obesity levels are rising in line with the England average. A similar pattern linked to areas of deprivation is apparent. A range of strategies including a Healthy Weight Strategy, Active Warrington which focuses on sport and physical activity, a Community Food Strategy and joint work between the local authority and schools to improve the take up of school lunches will all affect obesity levels.

The Healthy Schools initiative has been very successful in Warrington with all schools now involved. Additionally we are on target to ensure that every school owns a School Travel Plan by 2010. These facilitate and promote sustainable travel to school and ensure equal access by reducing the need to travel to school by car.

Overall there have been successes in reducing hospital and community health waiting times, and these present the opportunity for diversion of a greater proportion of local health resources to focus on the prevention agenda. We are getting better at gathering information about communities and so can improve our targeting of initiatives and neighbourhood involvement. In the longer term, the impact of our preventative service should lead to the improvements that we desire.

NHS Warrington is the national health organisation responsible for commissioning high quality and appropriate health services for all the people of Warrington and securing improvements in health and well-being for the population. The main providers of Healthcare within the town are Warrington and Halton Hospitals NHS Foundation Trust, NHS Warrington – Community Services Unit and 5 Boroughs Partnership NHS Trust. In addition to this, NHS Warrington commissions specialist services for children from Alder Hey Children’s Hospital, Central Manchester University Hospitals Foundation Trust and Cheshire and Wirral Partnership Foundation Trust.

Collaborative and joint working across all key agencies has developed considerably since 2006 and Children’s Centres are a key success. There are eleven Children’s Centres currently open and a further three will be open by 2010 which will complete the full roll out programme for Warrington. Children’s Centres deliver a wide range of integrated services for children aged 0-5 years and their families in the heart of the local community. Each centre delivers a ‘core offer’ of services including childcare provision, family and parenting support, health services and parental involvement initiatives. Services are delivered through a wide range of partner agencies supported by a core Sure Start staff team.

In Warrington the voluntary sector is actively involved in supporting children, young people and families to be healthy. Some examples of the work in this area are the use of volunteers by NHS Warrington; support for young carers through the Carers Centre; support for disabled children and their families by the provision of activities organised by the voluntary sector; and, the support of the voluntary sector in the Speech and Language Unit.

Our key priorities for 2009-2011	Success will look like this
BH1 Focus on a number of key areas to narrow the gap in health outcomes for children and young people	Breastfeeding <ul style="list-style-type: none"> • Breastfeeding peer support groups will be established in some children centres • More women will breastfeed at 6-8 weeks and 6 months Obesity <ul style="list-style-type: none"> • NHS Warrington and partners will have a joint weight management strategy and service development programme • A targeted intervention programme will be provided for children whose long term health is at risk due to their weight Vaccination and Immunisation <ul style="list-style-type: none"> • Over 90% of children will have completed the childhood vaccination programme Your health <ul style="list-style-type: none"> • All schools and children’s centres will have a jointly agreed health plan. The plan will aim

	<p>to deliver services and education to improve the health of the local population</p> <p>Travel to school</p> <ul style="list-style-type: none"> • A joint sustainable travel to school policy will be in place. The policy will support healthy modes of travel
BH2 Improve the transition of children and young people from children's to adult services	<ul style="list-style-type: none"> • The Children and Young People's Trust will have a joint transition policy, which all partner agencies and providers of children's services have agreed to follow • Processes and pathways will be in place to ensure that the move from children's to adults service is seamless
BH3 Work together to improve health and social care services for children and young people with complex needs	<ul style="list-style-type: none"> • Health and social care services for children with complex needs are delivered in an integrated way. They appear seamless to the user • Comprehensive Children and Adolescent Mental Health Service (CAMHS) in place • CAMHS tier 2/3 merger will be completed by June 2009, improving access, via a single point of access, and the patient experience and young people will not 'fall between the existing gaps' at tiers 2 and 3 • Strategic Commissioning Plan (SCP) and CAMHS investments are used to address gaps and pressures identified in the local strategy (e.g. Autistic Spectrum Disorder, Looked After Children) • Additional inpatients beds are commissioned to address the requirements of the amended Mental Health Act

Our Local Area Agreement (LAA) targets			
National Indicator	Current actual	2009/10 target	LAA final target 2010/11
NI051 Effectiveness of child and adolescent mental health (CAMHS) services	(07/08) 12	15	16
NI053 Percentage of infants being breastfed at 6-8 weeks (breastfeeding prevalence)	36.2%	42.6%	48.7%
NI056 Percentage of children in Year 6 with height and weight recorded who are obese	14.6%	14.5%	14.0%
NI058 Emotional and behavioural health of looked after children	Not yet available	To be agreed	To be agreed
NI112 Under 18 conception rate	(2007) -23.0%	-33.5%	-50.0%

b) Stay Safe

Safeguarding in Warrington is good. Performance data tell us that the number of children and young people who have a Child Protection Plan is below the national average. The Tellus survey showed a higher proportion of children and young people feeling very or quite safe than seen nationally, with fewer children and young people reporting that they had been bullied. Ofsted has assessed residential services as having 'good' safeguarding arrangements.

All agencies work together to provide support for children and young people who are looked after. There are on average 230 children looked after by Warrington Children's Services and this is below the national average. Over 85% are placed with either foster carers or family and friends, and wherever possible, close to home. All looked after children have a named social worker. Warrington has been successful in recruiting foster carers. Warrington also has a high number, on average 130, of children and young people who are looked after by other local authorities and placed in Warrington.

In what is a national trend over the past 12 months there has been an increase in the number of children who have needed to become looked after or who have required support from our social care services. This has resulted in an increased number of public law proceedings and additional resources have been allocated to the social work teams to facilitate the completion of initial and core assessments.

Over recent years, a major focus in Warrington has been on developing a robust preventative strategy. The Family Support Model (FSM) and the use of the Common Assessment Framework (CAF) are established in Warrington, with over 900 children and young people receiving services since its implementation, and referrals to targeted services are now more effective and timely. However, we are not complacent and see the consistent use of the CAF as an important tool in the identification and provision of services for children and young people. Building on its outstanding family support services Warrington has become one of 15 Family Pathfinders who will receive funding for a three year period up to 2011. This will develop a 'think family' approach to the way we work. This demands a more family-focused approach and is aimed at helping those families who are most excluded and who have complex, multiple problems including poverty, parental worklessness, lack of qualifications, parental mental health, substance abuse, poor housing, and contact with the criminal justice system. The Family Pathfinder project will deliver a cultural change in how services work together around multiple needs to prevent family breakdown and promote better outcomes for children and young people.

All staff within Children's Services have been trained to conduct 'safer' recruitment and the safer working practices for adults who work with children and young people that were set out in the allegations management advice published by the Department for Children Schools and Families (DCSF) have been endorsed, and accepted by the WSCB for use across all agencies. Child protection training continues to be delivered by the multi agency training pool.

Safeguarding in Warrington is seen as a key priority for all agencies, with many examples of joint working. The Multi Agency Risk Assessment Conference (MARAC) commenced in April 2008 to focus on support for the victims of domestic abuse and has led to the setting up of the Independent Domestic Violence Advocates (IDVA) service, a multi-agency approach. Reported incidents of serious domestic violence have challenged services

across all agencies, and the service has dealt with over 600 referrals in its first year, supporting children and their families through the court process. NHS Warrington, other health commissioners and Cheshire Constabulary are working together to establish a Sexual Assault Resource Centre for all ages and genders.

Other key achievements have included the establishment of the Child Death Overview Panel (CDOP) in April 2008 to have oversight of all children's deaths in Warrington, to monitor trends, and to investigate and make recommendations on any emerging trends; collaborative working with other partners in Cheshire on protocols and policies to enable appropriate response in sudden unexpected deaths in infancy and childhood (SUDIC) and deaths in suspicious circumstances; and the multi agency 'Better Outcomes for Children in Care'(BOCiC) group which meets monthly to monitor and develop joint working.

In Warrington, the voluntary and community sector is actively involved in making the borough a safer place for children and young people. A service for those children and young people who runaway in Warrington is provided by a multi-agency partnership and is recognised nationally by the DCSF as a model of good practice. The service works directly with over 200 families a year and raises awareness about the dangers through a variety of ways, including school assemblies and training to professionals. There is also a local quality assurance scheme, which looks at good practice delivery of child protection and safeguarding within voluntary organisations working with children and young people.

Our key priorities for 2009-2011	Success will look like this
SS1 Address the issues in the Laming Report to better safeguard children and young people in Warrington	<ul style="list-style-type: none"> • The Trust will provide leadership locally to ensure all agencies address their key responsibilities to improve practice • Issues raised in the internal audit of safeguarding services following the Lord Laming Report will be addressed • WSCB will be strong and focussed, under an independent chair • The Trust and WSCB will engage in joint reporting, challenge and peer review of their respective responsibilities to ensure the safety and well-being of children
SS2 Strengthen the commitment to confirming that safeguarding is everyone's business	<ul style="list-style-type: none"> • Agencies will support and empower children and young people to be engaged in service design and delivery – they will listen to children and young people • Staff working in frontline services in all agencies will understand their contribution to safeguarding children • Councillors and others will be competent in discharging their role as Corporate Parents • Other authorities who place looked after children in Warrington will be challenged to demonstrate their commitment to safety and well-being of those children • The Family Pathfinder will deliver a cultural change in how services work to support

	<p>families with multiple needs</p> <ul style="list-style-type: none"> Multi-agency forums (i.e. 'BOCiC' 'CDOP' etc) will share their learning and expertise around safeguarding
SS3 By working together commission services to improve provision for those children and young people who have been, or are in danger of being, abused	<ul style="list-style-type: none"> The multi agency approach to supporting child victims of domestic violence (via independent advocates) will be robust The Sexual Assault resource centre will meet the needs of children, in line with Standard 5 of the National Service Framework (NSF) Services to support children and young people who run away from home will work in a multi agency context to provide best support
SS4 All agencies to have appropriate policies and procedures in place to support safeguarding	<ul style="list-style-type: none"> ContactPoint will be operational Multi agency safeguarding training will be properly resourced and available to practitioners in all sectors. Client record systems will be electronic, up-to-date and supported by appropriate information sharing protocols CAF will be further embedded as a tool to support the identification and provision of services to children and young people The understanding of prevailing service thresholds (CAF, CAMHS etc) will be strong across all agencies

Our Local Area Agreement (LAA) targets

National Indicator	Baseline	2009/10 target	LAA final target 2010/11
N132 Repeat incidents of domestic violence	N/A	N/A	26%

c) Enjoy and Achieve

Warrington has an excellent reputation for education provision. Our primary and secondary schools achieve exceptionally high results in attainment, with performance at Key Stages 2, 3 and 4 having been consistently higher than national averages for some years. Strong partnership working has resulted in a broader range of opportunities for 14-19 year olds, including the new diplomas and there are good opportunities for further and higher education in the borough.

69% of schools are rated as 'good' or better by Ofsted and of these 17 schools rated as 'outstanding'. There is a collaborative approach to school leadership in Warrington, and the authority has a strong track record of supporting deputy headteachers to secure headships in the borough. Warrington is seen as a desirable place to work by teachers, with recruitment good and retention levels high.

Levels of attendance at school are among the highest in the country, and the rate of exclusions is low. 85% of our schools have achieved Healthy Schools status, with the remainder on target to achieve by December 2009. 31 schools have achieved ArtsMark status. Seven schools have achieved the full International Education Status with a further 14 achieving the intermediate or foundation award. All primary schools are delivering a modern foreign language as an integral part of the curriculum, well ahead of the Government target of 2010.

Involvement in activities outside of the traditional school day is increasing, and more young people than ever before are taking part in an increased range of activities in the holiday period, particular in the summer. Free swimming is now available to all children and young people in Warrington. Between August 2008 and January 2009 the Mobile Play Team, funded by the Big Lottery, helped over 2000 children, aged from 5 to 14 years, to enjoy arts, crafts, sports and fitness activities. The FitKidz project which is part of the Positive Futures initiative provides not only sports and training opportunities for children and young people aged 5–17 years but also opportunities for the training and recognition of volunteers. These are some of the ways that more activities are being offered to children and young people in Warrington, particularly those in the inner wards.

For those young people who are finding it difficult to realise achievements at school, an 'Accreditation' scheme gives young people who access youth support services the opportunity to credit their involvement in a variety of courses and awarding bodies, such as the Duke of Edinburgh Award and Youth Achievement Award. This has helped to build self-esteem and facilitated young people to remain or return to education with clear aspirations for their future.

We want to maintain and further improve our high educational attainment levels, and, at the same time, ensure that all our young people leave school with the necessary skills to enable them to succeed in the 21st century. However, we also need to address the significant differences in the attainment levels achieved by children and young people from disadvantaged backgrounds. We also need to ensure that all young people have access to the right levels of support to ensure that they are able to 'enjoy' as well as 'achieve'.

In Warrington there are over 300 voluntary organisations providing activities for children and young people. Voluntary organisations work collaboratively to provide help and support to families and to develop services and activities that are targeted at those who

are most at risk. The involvement of the voluntary sector will be crucial in the development of the Aiming High for Disabled Children programme.

Our key priorities for 2009-2011	Success will look like this		
EA1 Help all children and young people to be involved in activities outside of the school day	<ul style="list-style-type: none"> • All children and young people will have access to sports/physical activity and cultural opportunities outside of the school day • The volume and range of short break provision to meet the needs of disabled children and young people will increase • Out of school activity and community provision will be a key component of the way in which we will transform learning across Warrington 		
EA2 Continue to promote high standards in education by transforming the way education takes place in 21 st century Warrington	<ul style="list-style-type: none"> • Delivering our Primary Capital Programme and our Buildings Schools for the Future programme based on an agreed vision for transforming learning in Warrington schools • Targeted support will be in place for all children and young people living in more deprived households • The attendance and achievement of looked after children will improve • The number of pupils receiving a fixed term exclusion from school will reduce • The attainment of higher ability pupils will be further enhanced • Achievement outcomes for disabled children will be improved • Our ambition is that all schools are judged to be 'good' or better in Ofsted inspections by 2012 • No school will be below the national floor targets at Key Stages 2 and 4 by 2010 		
EA3 Promote the importance of emotional well-being for all our children and young people	<ul style="list-style-type: none"> • All children aged 0-5 will receive high quality care and learning experiences • Within the Foundation Stage Early Learning Goals, promote increased 'Personal, Social and Emotional Development'. • All schools will achieve the National Healthy Schools Award by July 2010 • The Social and Emotional Aspects of Learning (SEAL) programme will have been rolled out to all schools by July 2010 		
Our Local Area Agreement (LAA) targets			
National Indicator	Current Actual	2009/01 target	LAA final target 2010/11

NI102 Achievement gap between pupils eligible for free school meals and their peers (KS2 & 4)	2008 KS2 24pp ⁹ KS4 34pp	KS2 23pp KS4 32pp	KS2 22pp KS4 28pp
NI110 Young people's participation in positive activities	73.9%	78.9%	83.9%
DNI057 Children and young people's participation in high-quality PE and sport	(2008-09) 96.0%	96.0%	96.0%
NI072 At least 78 points across Early Years Foundation Stage with at least 6 in each of the scales	(2008) 59.0%	57.7%	59.0%
NI073 Achievement at level 4 or above in both English and Maths at Key Stage 2 (Threshold)	(2008) 79.7%	79.0%	82.0%
NI075 Achievement of 5 or more A*-C grades at GCSE or equivalent including English and Maths	(2008) 53.3%	58.0%	60.0%
NI087 Secondary school persistent absence rate	(2008) 4.7%	5.4%	5.3%
NI092 Narrowing the gap - lowest achieving 20% the Early Yrs Foundation Stage Profile vs the rest	(2008) 32.3 %	28.4%	28.1%
NI093 Progression by 2 levels in English between Key Stage 1 and Key Stage 2	(2008) 83.8%	91.0%	90.0%
NI094 Progression by 2 levels in Maths between Key Stage 1 and Key Stage 2	(2008) 83.1%	90.0%	88.0%
NI099 Children in care reaching level 4 in English at Key Stage 2	(2008) 63.0%	78.0%	44.0%
NI100 Looked after children reaching level 4 in mathematics at Key Stage 2	(2008) 63.0%	78.0%	33.0%
NI101 Looked after children achieving 5 A*-C GCSEs (or equivalent) at KS 4 (with English and Maths)	(2008) 0.0%	30.0%	15.0%

⁹ Percentage point difference between pupils eligible for free schools meals and their peers

d) Make a Positive Contribution

Children and young people play an active role in the decisions that affect them in Warrington. All schools have a school council. There is a Youth Parliament (known as IMPACT). Its membership is diverse, with care leavers, young offenders, young people with disabilities and young people from both affluent and deprived areas of the borough. 44% of eligible young people voted in the most recent elections, placing Warrington in the top three nationally. IMPACT has developed a local Manifesto with young people across the town. It reflects on the issues and concerns that the group will be focussing on over the next two years. The Manifesto has been formally taken through the Children's Services Overview and Scrutiny Committee and the Trust. A series of issues from the Manifesto are being worked on jointly by IMPACT, elected members and officers.

The Children in Care Council has been established. It is facilitated by the National Youth Advisory Service (NYAS) and links are being developed with the regional Children in Care Council. Joint work with NYAS and social care has also resulted in an improved take up of issues based advocacy for children in care and plans have been made to extend this across all agencies.

The rollout of neighbourhood working has given an opportunity to ensure that the voice of children and young people becomes embedded into this way of working. The new children and young people's area forums are linked closely with the neighbourhood management boards, allowing children and young people a clear role in the design and delivery of services. The local area youth fora were launched this year through large consultation events across the town. From these events three key issues were identified and will become the focus of Youth Summits over the next year – crime and community safety; transport; and things to do and places to go. These summits will bring together policy makers, communities and young people to address the issues and concerns raised.

Warrington was successful in its bid to host two high profile celebration events to raise the profile of young people's achievements across the town. INSPIRE engaged over 400 young people in showcasing their specific contributions to Warrington. Achievements celebrated included community, social and personal achievement as well as school and youth activities. It is hoped that there will now be an annual celebration event.

There is strong partnership working between the local authority, youth justice services, Cheshire Constabulary and health services, with restorative justice a priority and supported by all agencies. A key focus of the work of the Youth Offending Team (YOT) is the prevention of young people becoming involved with the youth justice system. General rates of offending and re-offending have reduced and are lower than the national average. YOT actively works with partner agencies to support the education and training needs of hard-to-reach young people, those in custody and those about to be released into the community. The Youth Justice Planning Tool, completed in 2008, has been used effectively for service planning. As the result of a successful bid to the Department of Health (DH) and the Prison Service, the YOT is working as one of only six pilot areas in the country in order to identify children and young people with potential mental health and other issues, to divert them from criminal justice processes at the earliest stage.

A range of intergenerational activities work to enhance community cohesion, and bring the benefits of being with older people to children and young people. An alliance between the youth parliament and Older People's Partnership Board is being developed to create a

more wide-ranging and systematic approach to intergenerational activities in support of the strategy for an ageing population.

Consultation with young people who have disabilities has been undertaken by an organisation called 'Changing Together' and their views will be reflected in the plans being made through the Aiming High for Disabled Children programme.

Whilst the engagement and involvement of children and young people is good in Warrington, we want to improve further, and there is more to do. This year the Children and Young People's Trust has focussed on ensuring involvement in the design and delivery of services. We want to monitor and assess the impact of children and young people's involvement on policy and practice, and to improve the support available to parents to ensure that they are also fully involved and are supported. We also want to ensure that the views of all children and young people are more routinely embedded into consultation processes, particularly for those who may face particular difficulties in making their voice heard, and to ensure that we promote community cohesion and sustainability.

In Warrington the voluntary sector plays a key role in supporting children and young people to make a positive contribution. One example is the work of the YMCA with young people who are homeless or at risk of being homeless.

Our key priorities for 2009-2011	Success will look like this
PC1 Monitor the impact of children and young people's involvement on policy and practice	<ul style="list-style-type: none"> • Youth Summits will directly impact future policy and practice in terms of transport, crime and community safety and places to go/things to do • IMPACT (Youth Council) manifesto will have directly influenced senior policy makers to deliver outcomes determined by young people • All direct service delivery will be able to evidence the active engagement of children, young people and families in service design and delivery
PC2 Improve the support available to parents	<ul style="list-style-type: none"> • Whole family assessments and care packages will be introduced across Warrington in an appropriate and timely way • Families will be able to access the appropriate parenting course to meet their particular need through a single referral point. People will be empowered to self-refer into family support and parenting programmes across the town
PC3 Promote community cohesion and sustainability	<ul style="list-style-type: none"> • All schools will have an appropriate range of extended services available to support children, young people and the community both during and outside of school hours • The range of volunteering opportunities across children's services will be expanded with more young people and adults

	<p>volunteering across Warrington</p> <ul style="list-style-type: none"> • Play opportunities will be expanded through the refurbishment and development of 22 playgrounds across the town and more play training for parents • Local areas will feel safer through the focus on responding to anti-social behaviour and preventing young people from entering the youth justice system
--	---

Our Local Area Agreement (LAA) targets			
National Indicator	Current Actual	2009/01 target	LAA final target 2010/11
NI111 First time entrants to the Youth Justice System aged 10 - 17	2007/08 1,320 per 100,000	1,254 per 100,000 (-5.0%)	1,241 per 100,000 (-6.0%)
NI006 Participation in regular volunteering	N/A	No survey	27.5%

