



Cheshire
Fire & Rescue Service

FIRE SAFETY

Do you have a church, village or community hall?

If so, the fire safety law applies to you.

If you run, manage or use a church, village, community hall or any other premises that is used by your local community there are a number of fire safety measures that you should consider.

These types of premises are considered to be **'Small and Medium Places of Assembly'**. You should use the Government Guidance for these premises when doing a fire risk assessment.

Visit the website for information



Keep up to date with what is happening in Cheshire Fire and Rescue Service:



www.cheshirefire.gov.uk/business-safety



@CheshireFRS



@CheshireFire
@CheshireBFS



@CheshireFRS



Cheshire Fire and Rescue Service



01606 868700



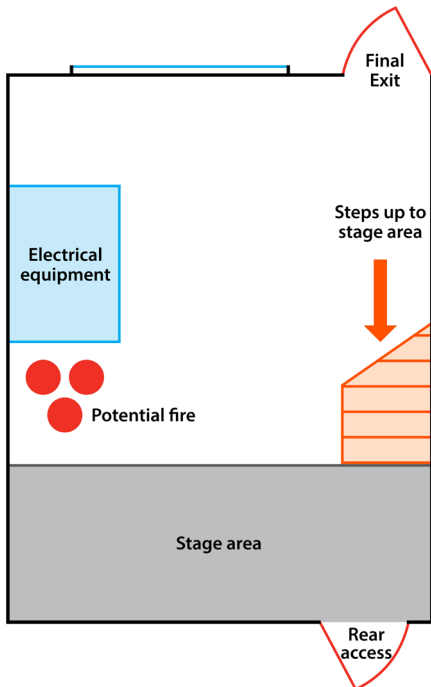
Cheshire Fire & Rescue Service
Clemonds Hey, Winsford
Cheshire CW7 2UA

www.cheshirefire.gov.uk

What do you need to know about fire safety?

It is important to update your fire risk assessment to consider the different ways that the premises is used throughout the year, for example:

- A hall used in the day by students for lunch or morning assemblies
- A hall rented out in the evening to a fitness group that uses it for exercise classes
- A hall used for sleepovers, for example, scout groups
- A hall used for Christmas nativity, concerts or plays etc



? Occupancy

Do you know how many people can safely use your building?

How do you control this?

? Escape Routes and Exits

Do you have enough emergency routes and exits?

Are they sufficient for the amount of people using the building at any given time?

? Travel Distance

How close are your exits?

In the event of a fire would all occupants be able to escape as quickly and safely as possible?

? Warning of fire

How would you detect a fire and warn occupants of a fire?

For example, scout group sleepover.

Emergency exits

If you only have **one exit** you can have no more than 60 people in your building.

If you have **more than one exit**, the number of people should not exceed what the doors can accommodate, for example:

- A 750mm door = 100 people
- A 1,050mm door = 200 people

But you should assume that one door will be blocked by a fire.

Temporary seating

Travel distances for seating in rows:

- One way - 15 metres
- Two or more ways - 32 metres

For further information on temporary seating please refer to the table below.

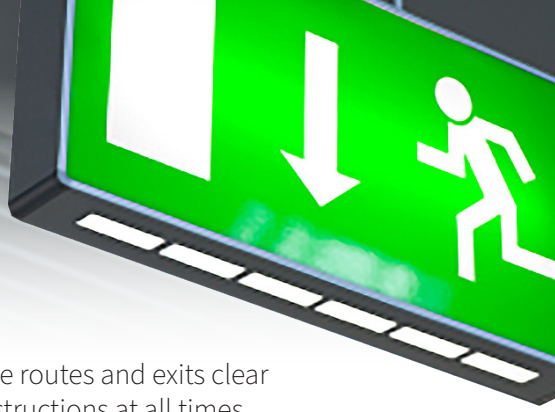
Travel distance

The travel distance from any point in a premises of 'normal' risk with more than one escape route should not exceed 45 metres. Therefore, where there is only one escape route, this distance should not exceed 18 metres.



Consult the Government Guide for more information. This is available to download at www.gov.uk

Seatway widths (mm)	Recommended maximum number of seats in a row	
	Seats in rows with 1 x gangway	Seats in rows with 2 x gangways
300 to 324 mm	7 seats	14 seats
325 to 349 mm	8 seats	16 seats
350 to 374 mm	9 seats	18 seats
375 to 399 mm	10 seats	20 seats
400 to 424 mm	11 seats	22 seats
425 to 449 mm	12 seats (maximum permitted) in a single direction of escape	24 seats
450 to 474 mm		26 seats
475 to 499 mm		28 seats



To ensure a safe means of escape:

- Keep any designated emergency escape routes and exits clear of combustible materials and other obstructions at all times
- Check that all escape route doors and exit doors open outwards and are unlocked
- Never exceed the maximum occupancy for your premises, giving consideration to the type and use of it
- Consider how you would detect a fire and warn occupants of a fire, particularly if there were large groups, background noise, sleepovers etc
- Consider what people would do if it was dark
- Consider the worst case scenario in the event of a fire and calculate to see that your means of escape are still sufficient
- Regularly update your fire risk assessment to reflect any changes to the use of the premises and/or people using your premises
- Check that everyone who uses the premises/facilities has knowledge of what to do in the event of a fire

For FREE business fire safety advice, visit our website or contact your local Protection team:

Warrington & Halton

 01925 634593

 fireadvicewarrington@cheshirefire.gov.uk

Cheshire West & Chester

 01244 322222

 fireadvicecheshirewestandchester@cheshirefire.gov.uk

Cheshire East

 01270 213246

 fireadvicecheshireeast@cheshirefire.gov.uk



Cheshire
Fire & Rescue Service