



**Cheshire**  
Fire & Rescue Service

# FIRE SAFETY

**Do you run or manage  
a restaurant, fast food  
outlet or takeaway?**

**If so, the fire safety law  
applies to you.**

A number of recent fires in Cheshire have affected businesses such as fast food outlets, takeaways, cafes and restaurants where upper floors are being used for sleeping accommodation. Often these are only accessed from the public or kitchen area of the property by a single unprotected staircase.

These fires often result in significant financial loss, with a high risk of injury and even death.

It is important that you put in place the right fire safety arrangements to protect not only the lives of you, your family, employees and customers, but also your property and your business.

**Visit the website for information**



**Keep up to date with what  
is happening in Cheshire Fire  
and Rescue Service:**



[www.cheshirefire.gov.uk/  
business-safety](http://www.cheshirefire.gov.uk/business-safety)



[@CheshireFRS](https://www.facebook.com/CheshireFRS)



[@CheshireFire](https://twitter.com/CheshireFire)  
[@CheshireBFS](https://twitter.com/CheshireBFS)



[@CheshireFRS](https://www.instagram.com/CheshireFRS)



[Cheshire Fire and Rescue  
Service](https://www.linkedin.com/company/Cheshire-Fire-and-Rescue-Service)



01606 868700



Cheshire Fire & Rescue Service  
Clemonds Hey, Winsford  
Cheshire CW7 2UA

**[www.cheshirefire.gov.uk](http://www.cheshirefire.gov.uk)**

# Reducing the dangers

- ✓ fit a smoke alarm to provide early warning of fire throughout the building
- ✓ keep escape routes clear from combustibile material and other obstructions
- ✓ never wedge open fire doors or remove door closing devices (a fire door can only protect you if it is kept closed)
- ✓ protect/separate staircases with fire resisting construction to ensure your exit route is safe

## Make sure your family and employees know how to:

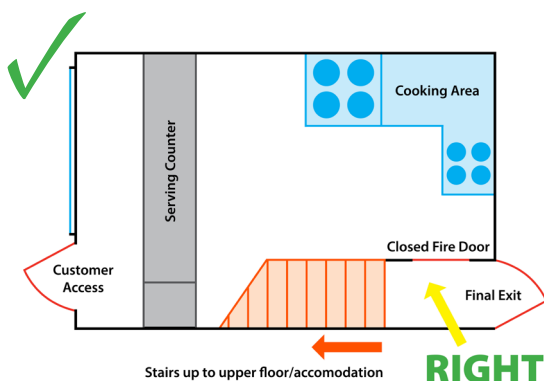
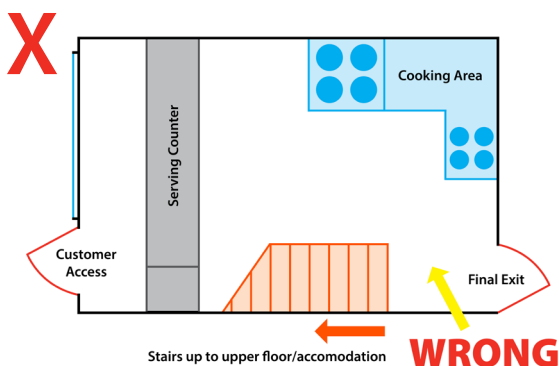
- get out of the building in the event of fire and
- call the Fire and Rescue Service on 999

have an  
escape  
plan

999

# Escaping safely

Exit routes are often blocked with combustibile materials meaning that people living above the business find it difficult to evacuate quickly and safely in an emergency. **A safe exit route must be available.**



An enclosed staircase with fire resisting construction to ensure all exit routes are safe.

# What must I do?

Regulatory Reform (Fire Safety) Order 2005 – makes you responsible for taking steps to protect the people using your premises from the risk of fire.

## You must:

- Carry out a fire risk assessment

### What is a fire risk assessment?

It is a thorough look at your premises and the people who are likely to use them. It considers the risk of fire breaking out and what measures you need to put in place to prevent it and keep people safe.

- If necessary, improve your fire safety measures
- Keep the risks, and your fire safety measures, under review



## Follow the **5** key steps

### step 1

Identify fire hazards

### step 2

Identify people at risk

### step 3

Evaluate, remove or reduce and protect from risk

### step 4

Record, plan, inform, instruct and train

### step 5

Review your fire risk assessment regularly



# What happens if I don't do a fire risk assessment?

**You are breaking the law and you could be putting people's lives at risk.**

We may inspect your premises as part of our responsibility to enforce the law, or a customer or someone working for you may report you to us if they feel at risk. If we think you need to improve your fire safety, we can give you advice on what measures may be appropriate for you to take and agree a time period for you to make the improvements.

We can also take formal legal enforcement action if you fail to do this, or if we find a serious fire risk that you are not managing, we can prohibit the use of part or all of your premises and your business may be closed down. If you live on the premises you may have to find somewhere else to stay.

Since the Regulatory Reform (Fire Safety) Order 2005 came into force we have prohibited the use of over 30 takeaway and restaurant premises because they were so unsafe. You may also face a hefty fine and/or imprisonment for breaches of fire safety law.



**For FREE business fire safety advice, visit our website or contact your local Protection team:**

## Warrington & Halton



01925 634593



fireadvicewarrington  
@cheshirefire.gov.uk

## Cheshire West & Chester



01244 322222



fireadvicecheshirewestand  
chester@cheshirefire.gov.uk

## Cheshire East



01270 213246



fireadvicecheshireeast  
@cheshirefire.gov.uk



**Cheshire**  
Fire & Rescue Service