



# annual report



2017-2018

## INVESTING IN FRONTLINE SAFETY

Cheshire's fire engines, road traffic collision equipment and firefighter helmets have all been upgraded to help ensure the Service continues to do the best job possible.

Three new fire engines, all 2017 plates, have been allocated to Warrington, Chester and Crewe.

These moves have allowed more advanced appliances to be allocated to Sandbach and Holmes Chapel, replacing their former 'Y' and 'V' registration vehicles with 2015 Scania fire engines.

The North West region also ran a joint project to procure the next generation of fire helmet. The new helmet, the MSA Gallet F1 XF, is more modern with improved fit and additional safety features.

It has improved eye protection and an integral lighting unit. The helmet has different coloured front plates which are interchangeable. These colours reflect the wearer's level of training and competence, allowing officers in charge at incidents to ensure they select appropriately trained personnel for specific tasks.

To enhance crew and casualty safety at road traffic accidents, Cheshire Fire and Rescue Service has also purchased equipment to quickly and effectively stabilise a vehicle.

Three models from different manufacturers were trialled with the winning bid from Holmatro UK with their V Strut. Following training, this piece of kit will be issued to all fire appliances during 2018.



## CFO Paul Hancock retires

Paul Hancock has retired as Chief Fire Officer and Chief Executive after 34 years with the UK fire service. Paul became Cheshire's chief in October 2009 having previously held the post of deputy. He joined Cheshire in 2007 following a 22-year career with Cumbria Fire and Rescue Service, where he attained the post of Assistant Chief Fire Officer. He also acted as joint Chief Fire Officer for both counties for 15 months in 2016-17 and is a former president of the Chief Fire Officers' Association.

Cllr Rudd, Cheshire Fire Authority Chair, said: "Paul has made considerable changes at a difficult time financially and he's managed to maintain the number of fire engines across the county, increase the number of fire stations and increase the number of home safety visits and prevention work. Both I and my fellow Fire Authority members wish to thank him for his dedication and commitment to Cheshire Fire and Rescue Service."

Speaking on his last day in office, Paul said: "Without the support of all the staff at the Service we could not have achieved all that we have under the financial constraints imposed nationally. I am so proud to have been a part of Team Cheshire and to have had the opportunity to work in such an enthusiastic and passionate organisation."

His successor is former Deputy Chief Fire Officer Mark Cashin, who joined Cheshire from Greater Manchester FRS in 2007 where he was a borough commander and also held a number of specialist and operational roles.

Mark said: "Since joining the Service I have continued to be hugely impressed with the commitment and dedication shown by all our staff. We are well-known for our innovative approach to reducing the risks facing our residents and businesses and I want to put on record my 100% commitment to further improving the safety and wellbeing of the communities we serve."



l to r: Paul Hancock, Councillor Bob Rudd and Mark Cashin

## Fantastic fourth for Stonewall

Cheshire Fire and Rescue Service has been named the most LGBT-friendly emergency service in the UK, making it into the top five of charity Stonewall's prestigious Top 100 Employers list for 2018.

The Service jumped four places from their 8th place in 2017, to be ranked a fantastic 4th position. It means Cheshire is the best performing emergency service in the UK due to its efforts to engage lesbian, gay, bisexual and transgender (LGBT) staff, volunteers and communities.

It's the sixth consecutive year the Service has featured in the Top 100, which assesses organisations ranging from local authorities to international investment banks against criteria including engagement with staff and communities, training and leadership.

Stonewall also recognised Cheshire as a Star Performer, a new commendation which recognises consistent high performance. Furthermore, the Service's LGBT Employee Network Group, FirePride, has been rewarded with a Highly Commended Network Group 2018.

Cllr Bob Rudd, Chair of Cheshire Fire Authority said "No one from the LGBT community should hesitate to engage with our staff or volunteers and the Service's fourth position on the Stonewall Top 100 list provides that reassurance."





# Thousands turn out for Blue Light Open Day



## Thousands of visitors got a unique insight into the work of Cheshire's emergency services at the Blue Light Open Day.

Held jointly between the Service and Cheshire Police at the Clemonds Hey headquarters in Winsford, the event was an opportunity to showcase the skilled and varied work both organisations do to help keep communities safe.

There were displays from the Cheshire Fire Cadets, the Constabulary Band and a demonstration of how fire and police work together at road traffic collisions, along with action-packed demonstrations by the Rope Rescue Team, public order police dealing with petrol bombings and an electrifying Taser demonstration by specially-trained officers.



## Blue Light Collaboration update

**Plans to join a number of back office and professional services at Cheshire and Fire Rescue Service and Cheshire Police are continuing to progress.**

All of the Corporate Service teams, including Human Resources, Information Technology and Legal Services, are now providing a joint service, helping improve the resilience available to both organisations.

Some of the senior officers, including Chief Fire Officer and Chief Executive Mark Cashin, are also now based at Clemonds Hey.

The new joint headquarters at Clemonds Hey is being developed to ensure that the look and feel reflects the cultures of combined teams and encourages closer working between individuals and organisations.



# Fire Authority thanks public for views

Cheshire Fire Authority has thanked everybody who took the time to share their views during a consultation about plans for the future.

At a meeting at the Service's Headquarters in Winsford, members of the Authority officially considered all of the feedback received and agreed a number of changes to the draft Integrated Risk Management Plan (IRMP) for 2017/18.

Chair of Cheshire Fire Authority, Cllr Bob Rudd, said: "We're grateful to everyone who took the time to respond to our consultation and we have considered all of the feedback received."

"Like many other public services, we are facing some challenging times ahead but we believe our plan maintains a strong focus on both the safety of our communities and our firefighters."

The IRMP for 2017/18 involved the implementation of the following projects:

- Redeveloping a new operational training centre at the Service's current Winsford Headquarters site.
- Work to expand the current Cardiac Response pilot to all fire stations in partnership with the North West Ambulance Service.
- Continue to campaign to ensure that requirements for sprinkler systems in schools remains in place.

Members also agreed to increase the Service's Council Tax precept by 1.99%.



# Four awards in a year for Safe & Well visits



**L**ifesaving work by Cheshire firefighters and advocates has won four national awards in the first year of the innovative and ground-breaking Safe and Well programme.

The Service offers a free 'Safe and Well' visit for people who are aged over 65 and for people who are referred to it by partner agencies because they are considered to be at a particular risk. The visits incorporate the traditional fire safety information (and smoke alarm fitting where required), and also offer additional advice on slips, trips, fall prevention, a heart check, bowel cancer screening as well as offering additional support to those who wish to stop smoking, taking drugs or reduce their alcohol consumption. During winter, winter warmth safety advice is also discussed.

The awards won are the iESE Public Sector Transformation Award 2018, Excellence in Fire and Emergency Award 2017, Healthcare Transformation Award 2017 and the Heart Rhythm Showcasing Best Practice 2017.

Head of Prevention Nick Evans said: "We are delighted that the fantastic work of our firefighters and prevention team advocates has been recognised by these awards. The Safe and Well visits have been invaluable in increasing the number of interventions which take place in the homes of the most vulnerable in Cheshire."

Between 1 April 2017 and 31 March 2018 Cheshire firefighters and advocates carried out over 40,000 Safe and Well visits, with 7.5% of those visits resulting in a referral to health and/or other agencies.

# Crewing review

Earlier this year, Cheshire Fire Authority considered a review into plans to introduce an on-call duty system for the second fire engines at Crewe and Ellesmere Port fire stations.

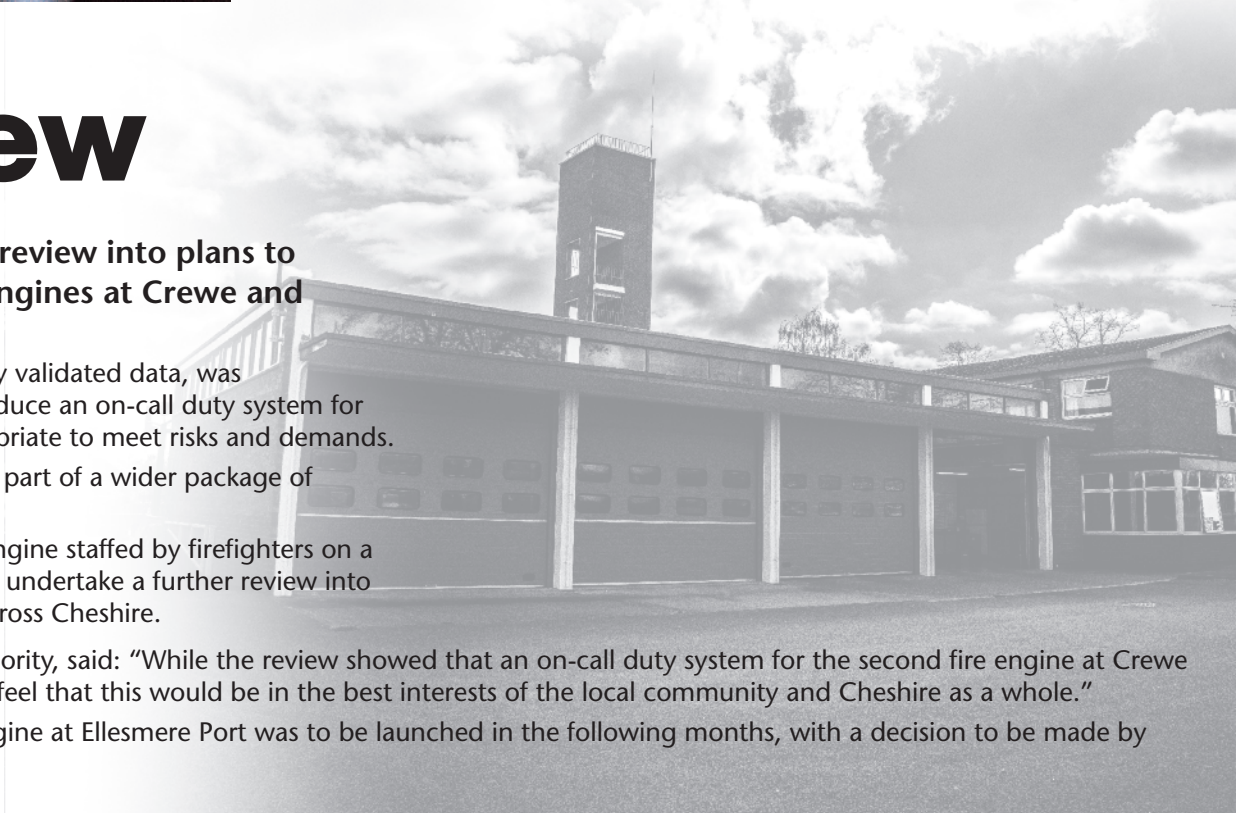
The review, which was undertaken by officers using independently validated data, was commissioned by the Authority to determine whether plans to introduce an on-call duty system for the second fire engines at Crewe and Ellesmere Port were still appropriate to meet risks and demands.

Members had originally decided to introduce this plan in 2013 as part of a wider package of change to emergency cover across Cheshire.

However, in Crewe, the Authority voted to keep the second fire engine staffed by firefighters on a whole-time duty system. For Ellesmere Port, the Authority decided to undertake a further review into where this resource could be situated to provide the most benefit across Cheshire.

Following the decision, Cllr Bob Rudd, Chair of Cheshire Fire Authority, said: "While the review showed that an on-call duty system for the second fire engine at Crewe was appropriate operationally, after consideration members did not feel that this would be in the best interests of the local community and Cheshire as a whole."

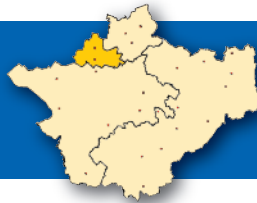
A review of the optimum potential location for the second fire engine at Ellesmere Port was to be launched in the following months, with a decision to be made by Authority members at a later date.





# Your Service v

## Halton Unitary performance area profile



In the last three years, primary fires in Halton have increased by 19%. These are fires that involve property such as buildings and vehicles, and include both accidental and deliberate incidents. The number of fire-related fatalities and injuries remains low, with the majority of hospital admissions as a result of slight injuries.

Also included in the primary fires category are accidental fires in the home, which have not changed in the last three years. Delivery of Safe and Well visits continues to be focused on those households most at risk and this is backed up with publicity campaigns highlighting key safety messages, particularly around safety in the kitchen where around 60% of house fires start.

Deliberate fires have seen a 6% reduction over the past three years. While deliberate primary fires saw an increase of 80%, deliberate secondary fires saw a decrease of 19%. The main cause of the increase in deliberate primary fires was vehicle fires, particularly motorcycles and cars which, combined, have seen a 90% increase in three years.

Cheshire Fire and Rescue Service's intelligence-led approach to identifying 'hotspot' areas of high activity has become more sophisticated and problem areas are highlighted and tackled with a range of arson reduction and youth engagement initiatives. The main cause of the increase in deliberate primary fires was vehicle fires, particularly motorcycles and cars which, combined, have seen a 90% increase in three years.

Key statistics	2015-16	16-17	17-18
Primary fires per 100,000 population	101.01	121.75	119.13
Fatalities from primary fires per 100,000 population	0.79	2.36	0.00
Injuries from primary fires per 100,000 population	4.73	2.36	8.62
Deliberate primary fires per 10,000 population	3.16	5.18	5.64
Deliberate secondary fires per 10,000 population	20.60	13.82	16.62

### Key contacts



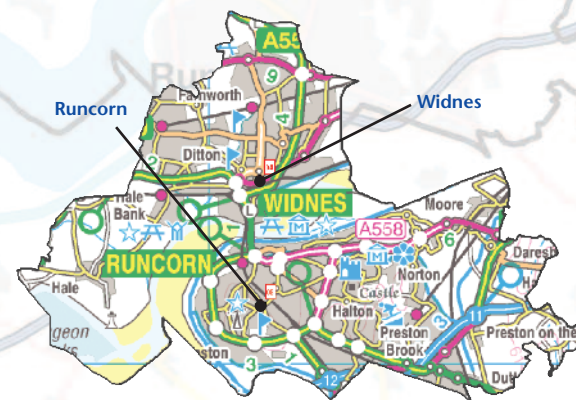
**Mike Clark** Service Delivery Manager  
**Lorraine Page** Locality Safety Manager  
**Liz Thompson** Hub Administration Manager  
**Carl Rainbird** Station Manager - Protection

Your local station – For more information about your local fire station, please visit our website [www.cheshirefire.gov.uk](http://www.cheshirefire.gov.uk)

### Fire Authority Members



**Phil Harris** **Stef Nelson** **Rob Polhill**



■ Wholtime station  
(Runcorn also has an on-call watch)

© Crown copyright and database rights 2016  
Ordnance Survey 1000240064

## Cheshire West & Chester Unitary performance area profile



In the last three years, primary fires in Cheshire West & Chester have increased by 11%. These are fires that involve property such as buildings and vehicles, and include both accidental and deliberate incidents. The number of fire-related fatalities and injuries remains low, with the majority of hospital admissions as a result of slight injuries

Also included in the primary fires category are accidental fires in the home, which have increased by 12% in the last three years. Delivery of Safe and Well visits continues to be focused on those households most at risk and this is backed up with publicity campaigns highlighting key safety messages, particularly around safety in the kitchen where around 60% of house fires start.

Deliberate fires have seen a 19% reduction over the past three years. Deliberate primary fires saw a 6% decrease and deliberate secondary fires saw a decrease of 23%. Cheshire Fire and Rescue Service's intelligence-led approach to identifying 'hotspot' areas of high activity has become more sophisticated and problem areas are highlighted and tackled with a range of arson reduction and youth engagement initiatives.

Key statistics	2015-16	16-17	17-18
Primary fires per 100,000 population	95.22	105.74	104.15
Fatalities from primary fires per 100,000 population	0.60	0.30	0.59
Injuries from primary fires per 100,000 population	2.70	5.36	5.92
Deliberate primary fires per 10,000 population	2.46	2.41	2.28
Deliberate secondary fires per 10,000 population	9.70	9.14	7.40

### Key contacts



**Tony O'Dwyer** Service Delivery Manager  
**Emma Coxon** Locality Safety Manager  
**Emma Mason** Hub Administration Manager  
**Ian Kay** Station Manager - Protection

Your local station – For more information about your local fire station, please visit our website [www.cheshirefire.gov.uk](http://www.cheshirefire.gov.uk)

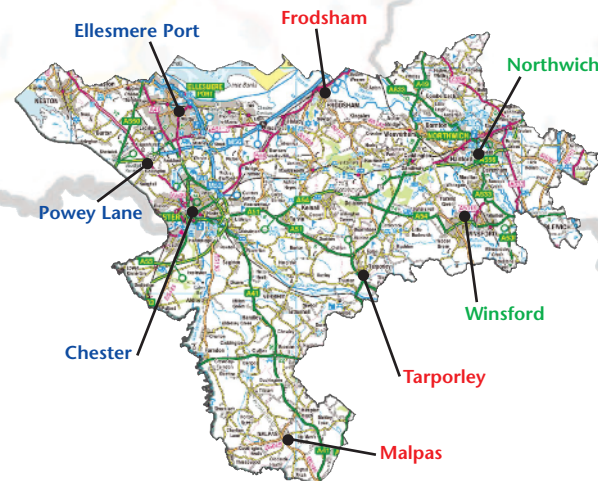
### Fire Authority Members



**Martin Barker** **Don Beckett** **Eleanor Johnson** **Nigel Jones**



**Jane Mercer** **Stuart Parker** **Bob Rudd** **Tony Sherlock**



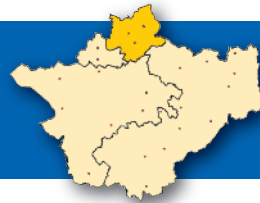
■ Wholtime station  
■ Day crewed station  
■ On-call station

© Crown copyright and database rights 2016  
Ordnance Survey 1000240064



# where you live

## Warrington Unitary performance area profile



In the last three years, primary fires in Warrington have decreased by 6%. These are fires that involve property such as buildings and vehicles, and include both accidental and deliberate incidents. The number of fire-related fatalities and injuries remains low, with the majority of hospital admissions as a result of slight injuries.

Also included in the primary fires category are accidental fires in the home, which have seen a 24% reduction in the last three years. Delivery of Safe and Well visits continues to be focused on those households most at risk and this is backed up with publicity campaigns highlighting key safety messages, particularly around safety in the kitchen where around 60% of house fires start.

Deliberate fires have seen a 10% reduction over the past three years. While deliberate primary fires saw an increase of 6%, deliberate secondary fires saw a decrease of 14%. Cheshire Fire and Rescue Service's intelligence-led approach to identifying 'hotspot' areas of high activity has become more sophisticated and problem areas are highlighted and tackled with a range of arson reduction and youth engagement initiatives.

Key statistics	2015-16	16-17	17-18
Primary fires per 100,000 population	114.54	100.97	106.82
Fatalities from primary fires per 100,000 population	0.00	0.48	0.48
Injuries from primary fires per 100,000 population	4.33	4.79	3.34
Deliberate primary fires per 10,000 population	3.08	2.97	3.24
Deliberate secondary fires per 10,000 population	13.43	10.77	11.40

**Key contacts**



**Mike Clark**  
Service Delivery Manager



**Lorraine Page**  
Locality Safety Manager



**Liz Thompson**  
Hub Administration Manager



**Carl Rainbird**  
Station Manager - Protection

**Your local station** – For more information about your local fire station, please visit our website [www.cheshirefire.gov.uk](http://www.cheshirefire.gov.uk)

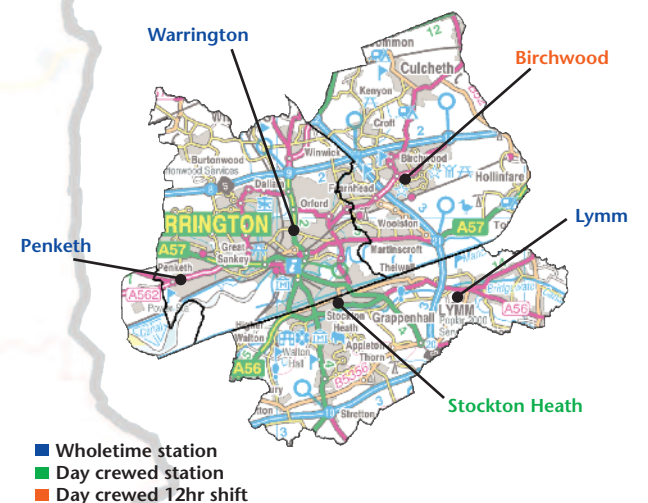
### Fire Authority Members



Mike Biggin Karen Mundry



Morgan Tarr Steve Wright



© Crown copyright and database rights 2016  
Ordnance Survey 1000240064

## Cheshire East Unitary performance area profile



In the last three years, primary fires in Cheshire East have increased by 5%. These are fires that involve property such as buildings and vehicles, and include both accidental and deliberate incidents. The number of fire-related fatalities and injuries remains low, with the majority of hospital admissions as a result of slight injuries.

Also included in the primary fires category are accidental fires in the home, which have increased by 6% in the last three years. Delivery of Safe and Well visits continues to be focused on those households most at risk and this is backed up with publicity campaigns highlighting key safety messages, particularly around safety in the kitchen where around 60% of house fires start.

Deliberate fires have seen a 27% increase in the last three years. While deliberate primary fires saw a 6% decrease, deliberate secondary fires saw an increase of 43%. Cheshire Fire and Rescue Service's intelligence-led approach to identifying 'hotspot' areas of high activity has become more sophisticated and problem areas are highlighted and tackled with a range of arson reduction and youth engagement initiatives.

Key statistics	2015-16	16-17	17-18
Primary fires per 100,000 population	92.36	105.49	96.08
Fatalities from primary fires per 100,000 population	0.80	0.80	0.26
Injuries from primary fires per 100,000 population	6.12	4.24	6.07
Deliberate primary fires per 10,000 population	1.89	2.07	1.77
Deliberate secondary fires per 10,000 population	3.81	3.50	5.38

**Key contacts**



**Mark Bushell**  
Service Delivery Manager



**Lorraine Page**  
Locality Safety Manager



**Bev Hughes**  
Hub Administration Manager



**Mark Burrage**  
Station Manager - Protection

**Your local station** – For more information about your local fire station, please visit our website [www.cheshirefire.gov.uk](http://www.cheshirefire.gov.uk)

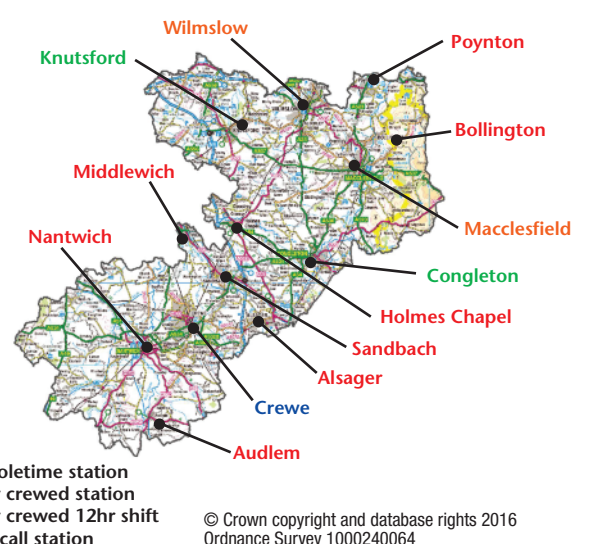
### Fire Authority Members



Damian Bailey Beverley Dooley Dorothy Flude George Hayes



Dennis Mahon Gillian Merry Margaret Simon Jacqui Weatherill



© Crown copyright and database rights 2016  
Ordnance Survey 1000240064



# Enhancing young people's education, home and abroad

Two Nepal schools and the education of local children have been changed for generations to come, thanks to both Cheshire Fire Cadets and a group of Firefighter & Community Safety Apprentices.

Fire cadets from across the county travelled to Kangel in north eastern Nepal where they took part in a project that provided additional new classrooms for the local school. Not only did they raise all their travel costs, they also raised all the money for the materials for the project.

The Apprentices, who also raised all the money needed for their project, and more, went to the remote Nepalese village of Kharikhola, near Lukla. They helped build an Early Years Centre to earthquake-resistant standard which will provide specialist early years learning resources.

Chief Fire Officer Mark Cashin said: "We work in partnership on these projects with the charity Classroom in the Clouds. They not only help young people in Nepal to gain a better education, they also enable the Service to motivate our young people, be they apprentices or cadets, to develop and enhance their lives both physically and mentally."



CFRS Apprentices in Kharikhola



# Service wins Tyre Safety Award

Cheshire Fire and Rescue Service has won an award for its tyre safety campaign.

The Service won a Tyre Safety Award in the Community category for their work with national charity partner TyreSafe.

There are more than 10 million illegal tyres on the roads in the UK with most people only finding out they have been driving on unsafe tyres when they go for their annual MOT check.

Illegal tyres were the cause of more than 1,000 crashes in the last year, almost double the amount caused by people being distracted by mobile phones.

Cheshire Fire and Rescue Service and Tyre Safe have been running awareness events for Cheshire's drivers by engaging with the public and offering a free tyre safety check along with advice on how to check tyres and the potential consequences of underinflated or over worn tyres.

Colin Heyes, Road Safety Manager at Cheshire Fire and Rescue Service, said: "We are delighted to have won this award for trying to tackle what is a huge problem on our roads.

"Most people don't think about their tyres when going from A to B but worn tyres can burst at any time or significantly increase stopping distances with deadly consequences."



## Summary of accounts 2017-18



Cheshire Fire Authority is the public body which manages Cheshire Fire and Rescue Service on behalf of local communities. It is made up of 23 elected Members, with eight appointed by Cheshire West and Chester, eight by Cheshire East, three by Halton Borough and four by Warrington Borough. The current political composition of the Authority is Conservative (8), Labour (12), Independent (2) and Liberal Democrat (1).

The Authority is a separate legal body and has the power to set council tax and agree its own policies and procedures without needing the approval of these local councils. Its meetings are open to the public and are usually held at the Service's Sadler Road site in Winsford. Full details are on the website – [www.cheshirefire.gov.uk](http://www.cheshirefire.gov.uk).

Its key duties include approving the annual budget; setting its council tax level and agreeing the numbers of staff and levels of equipment necessary to provide an effective service and approving the organisation's key policies, plans and strategies.

It is also responsible for ensuring its business is

conducted in accordance with the law and proper standards, the public money is properly accounted for and how it aims for continuous improvement. To demonstrate this it produces an Annual Governance Statement to accompany the Statement of Accounts. From 2013-14 the Authority has included this as part of its annual Assurance Statement. Both the Annual Accounts and the Assurance Statement are available on the Authority's website.

### Accounts

The Fire Authority's accounts show how it uses its resources to deliver a fire and rescue service across Cheshire. The summary accounts below provide an overview of where the funds come from, how they are used and the financial position as at March 31 2018.

### Summary Revenue Account

The 2017/18 Fire Authority net revenue budget was £41.2m, with total net expenditure incurred of £41.1m resulting in an underspend of around £0.09m. The Authority has a general reserve of £8m. This has been assessed as proportionate to the risks facing the organisation and balances the current public sector

financial position with the need to ensure there are sufficient funds to deal with major incidents. The Authority also holds earmarked reserves to meet specific needs. In line with the continuing financial pressure it faces, the Authority has developed a range of options to deliver future savings. Implementing some of these will take time, however, and it is recognised that the Authority's reserves will be needed to smooth the financial pressure over the next few years.

### Summary Balance Sheet

The Summary Balance Sheet shows the 2017/18 end of year position and the most obvious point to note is the net liability of £476m. In other words, the Fire Authority has assets worth £97m, but has long term liabilities of £565m. Most of the liabilities relate to expected future pension costs of £563m, compared to £533m in 2016/17. All local authorities are required to recognise this liability in their balance sheet even though it is not an immediate call on their resources, but instead is paid out over the life of existing and future pensioners. At present, all deficits on the Firefighters' Pension Scheme are funded by Government through a specific top up grant.

Summary Revenue Account 2017-18	£'000	£'000
Firefighting and Rescue Operations	22,966	
Protection and Prevention	3,513	
Premises, Fleet and other Corporate Support Costs	11,262	
<b>Net Cost of Service</b>		<b>37,741</b>
Other income, expenditure and adjustments	3,617	
<b>Amount to be met by Govt Grant and Local Taxation</b>		<b>41,358</b>
Revenue Support Grant and Local Taxation	-14,819	
Council Tax	-26,449	
<b>Net General Fund (Surplus)\Deficit</b>		<b>-90</b>
Balance on General Fund brought forward	-7,987	
Net movement on earmarked reserves	-134	
<b>Balance on General Fund Carried Forward</b>		<b>-8,211</b>

Summary Balance Sheet 2017-18	£'000	£'000
Long Term Assets	65,879	
Current Assets	31,181	
Long Term Liabilities	-564,961	
Current Liabilities	-8,227	
<b>Total Assets less Total Liabilities</b>		<b>-476,128</b>
<b>Financed by:</b>		
Unusable reserves	504,349	
Earmarked Reserves	-20,010	
General Reserve	-8,211	
<b>TOTAL NET WORTH</b>		<b>476,128</b>





# Focus on Performance 2017-18

The Service continues to focus its fire prevention activity on those who are most vulnerable. Over the past three years fire crews and safety advocates have visited and carried out Home Safety Assessments (which became Safe and Well visits in February 2017) in over 110,000 homes.

The Service's prevention agenda continues to have positive impact on the numbers killed and injured. Over the past decade house fires have reduced by 38%, however fire-related injuries have increased by 16% compared to 10 years ago due to better validation and more accurate recording. 86% of households where dwelling fires have occurred have a working smoke alarm.

In addition, deliberate fires, which often occur outdoors, have also reduced by almost 70% since 2007/08 with conviction rates exceeding the national average.

The Service has also helped to change the lives of nearly 9,000 young and often disadvantaged young people through its Prince's Trust and RESPECT courses since they began.

The following infographic highlights some of the key trends relating to different aspects of the organisation's performance over recent years.

## Key Service Trends

### Community Outcomes



... although 58% of these still start in the kitchen

Injuries caused by fires in the home are up 16% compared to 10 years ago  
*\*More injuries are being recorded due to better processes and validation*



86% of households, where dwelling fires have occurred, have a working smoke alarm,

69% fewer deliberately ignited fires than 10 years ago



Over 3300 fewer fires were attended last year compared to 10 years ago

### Prevention and Protection



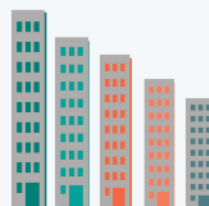
The Service continues to work with partners to share and analyse data and identify those who are most at risk.



Nearly 9,000 young people have completed Prince's Trust and RESPECT courses since they began



False alarms caused by automatic systems in businesses and commercial premises reduced by 63% over 5 years



Over 3,300 business inspections and audits were completed last year

Conviction rates for deliberate fire activity still exceed the national average

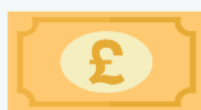


### Staff and Services



Sickness remains low with an average of 4.8 days per person

All essential firefighting training has been completed



Value for money reviews continue to generate savings

## Volunteers give the gift of time

There are currently some 300 people that volunteer within the Cheshire Fire and Rescue Service Volunteer Unit and three of them have received awards for collectively giving over 9,000 hours of their own time to help Cheshire residents.

Craig Howell volunteers as a Cadet Leader at Sandbach Fire Station where he makes a positive contribution to the community through working with young people and supporting local events and initiatives. Chris Harrop from Lymm and Stephen Dyke from Glazebrook volunteer with the Service's Post-Fire Support Team which helps to clear and clean up domestic properties after a fire.

Cheshire Fire Authority member Cllr Eleanor Johnson presented them with their awards at the Volunteer Achievement Awards.

The Service is currently looking for more cadet leaders and also for volunteers to help maintain and manage the vintage fire engines. There's more information at: <http://www.cheshirefire.gov.uk/jobs/volunteers>



## Life-saving devices fitted

Life-saving devices have been installed outside all of Cheshire Fire and Rescue Service's 28 fire stations to help save the lives of people who suffer a cardiac arrest.

Funded by Cheshire Fire Authority, the wall-mounted Automated External Defibrillators (AED) have been installed at fire stations across the county. They can be accessed by members of the public in the event of someone suffering a cardiac arrest in the vicinity.

Deputy Chair of Cheshire Fire Authority Councillor Stef Nelson said: "While we hope that they won't be needed, we understand how important defibrillators are and why they need to be accessible 24/7. By fitting them to the outside of a fire station we are giving everyone within the local community that life-saving capability."

"When someone suffers a cardiac arrest, for every minute that passes without CPR and defibrillation their chances of survival reduce by 10% so, in a short space of time, their chances of recovery can slip away completely. Getting more defibrillators installed across our region will help us save even more lives."

Fire engines across Cheshire already carry defibrillators which can be used at operational incidents and any events attended by fire engines.



# Major Mersey Gateway exercise

**E**mergency services and bridge maintenance teams took part in a major emergency planning exercise on the new Mersey Gateway Bridge.

The exercise involved almost 100 people from Cheshire Fire and Rescue Service, Cheshire Police, the North West Ambulance Service, the Environment Agency and Halton Borough Council, as well as members of Merseylink's bridge maintenance team.

It simulated a multi-vehicle accident and diesel spillage on the bridge, and was designed to test how the emergency services would respond to a real emergency on the bridge route.

This was a vital part of the final planning ahead of the opening of the new bridge, meaning all services had the opportunity to assess their responses to ensure they can respond effectively to a real emergency situation.

The scenario was put together by Station Manager Marc Beechey: "The Mersey Gateway Bridge exercise has been a huge but enjoyable project to organise.

"It has created an excellent working platform and has set the foundations for a fantastic working relationship between the Service and our partner agencies. It provided valuable knowledge and understanding into agency roles when dealing with complex incidents involving a number of combined scenarios including a multi-vehicle collision and diesel spillage, and how effective team work and communication is in an effective and safe rescue."



## Safety Central for lifeskills

Safety Central, the Services interactive lifeskills education centre at Lymm, opened its doors to visitors in July 2017.

The infographic shows comments and statistics from July to the end of March 2018. Schools and community groups are welcome to bring their children and young people free of charge and can book on line at [safetycentral.org.uk](http://safetycentral.org.uk).

