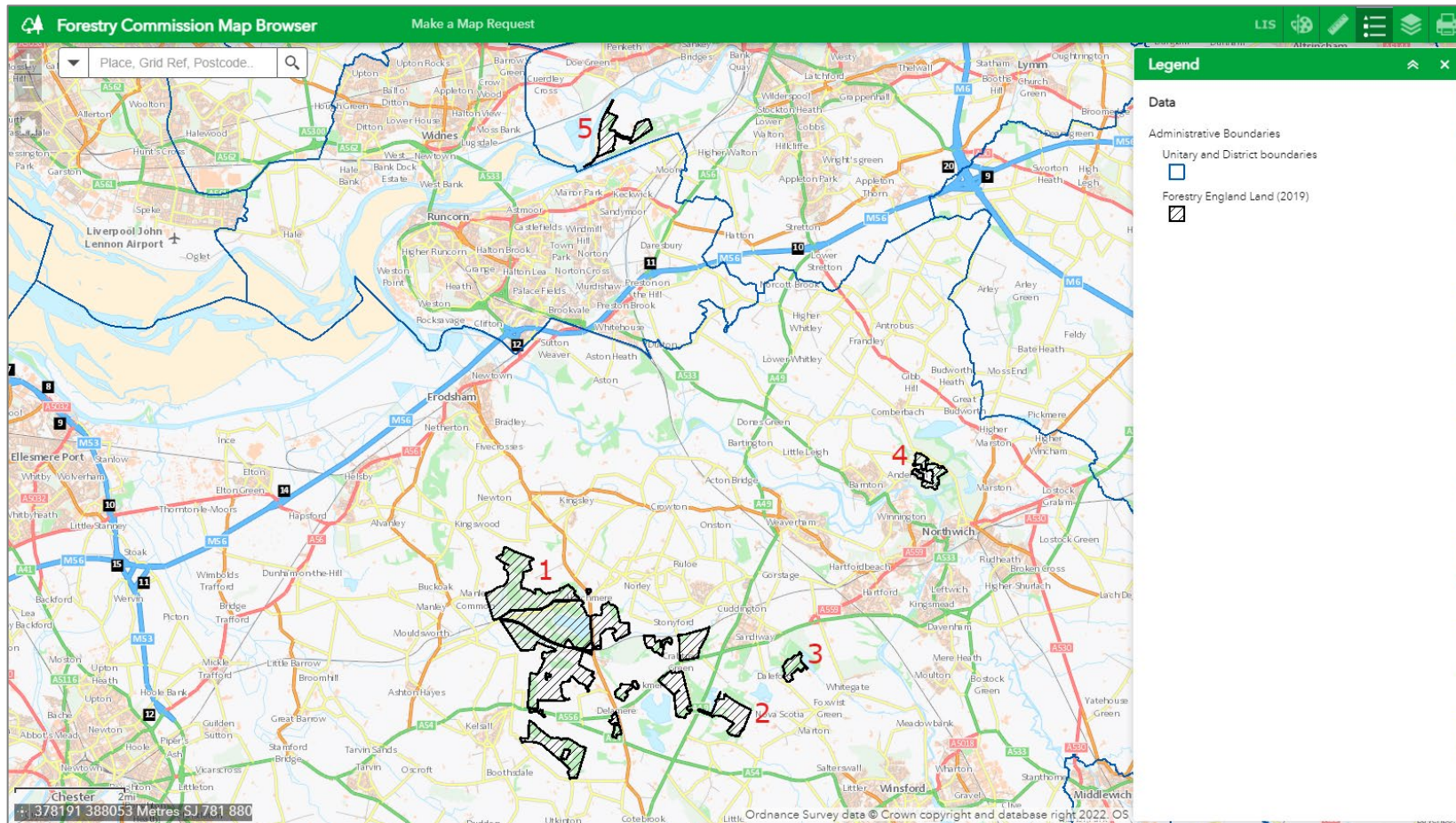


## FOI 1721 - Fires at Forestry Commission Sites

To glean the information requested I used our Incident Recording System for data on fires attended and I also used the following websites for the Forestry Commission sites and boundaries in Cheshire.

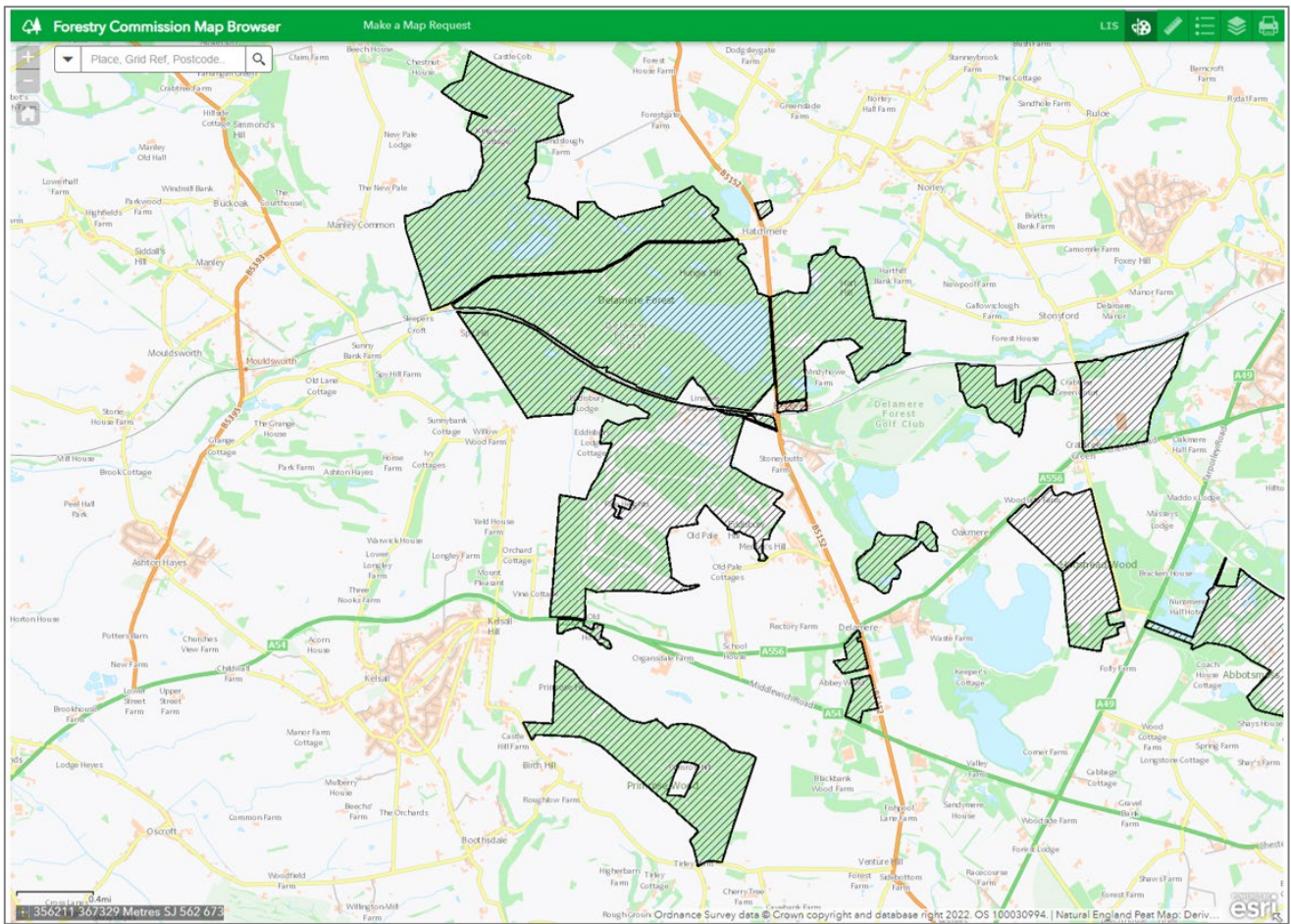
- Forestry Commission Map Browser - <https://www.forestergis.com/Apps/MapBrowser/>
- Woodland Trust - <https://www.woodlandtrust.org.uk/visiting-woods/find-woods/>

Using the Forestry Commission Map Browser, the sites below were found in Cheshire and they have been labelled 1 to 5. Even though I have separated Abbotsmoss Wood (2) and Pettypool Wood (3) these are regularly counted as being part of Delamere Forest Park (1).



## Delamere Forest Park

1. <https://www.woodlandtrust.org.uk/visiting-woods/woods/delamere-forest-park/>

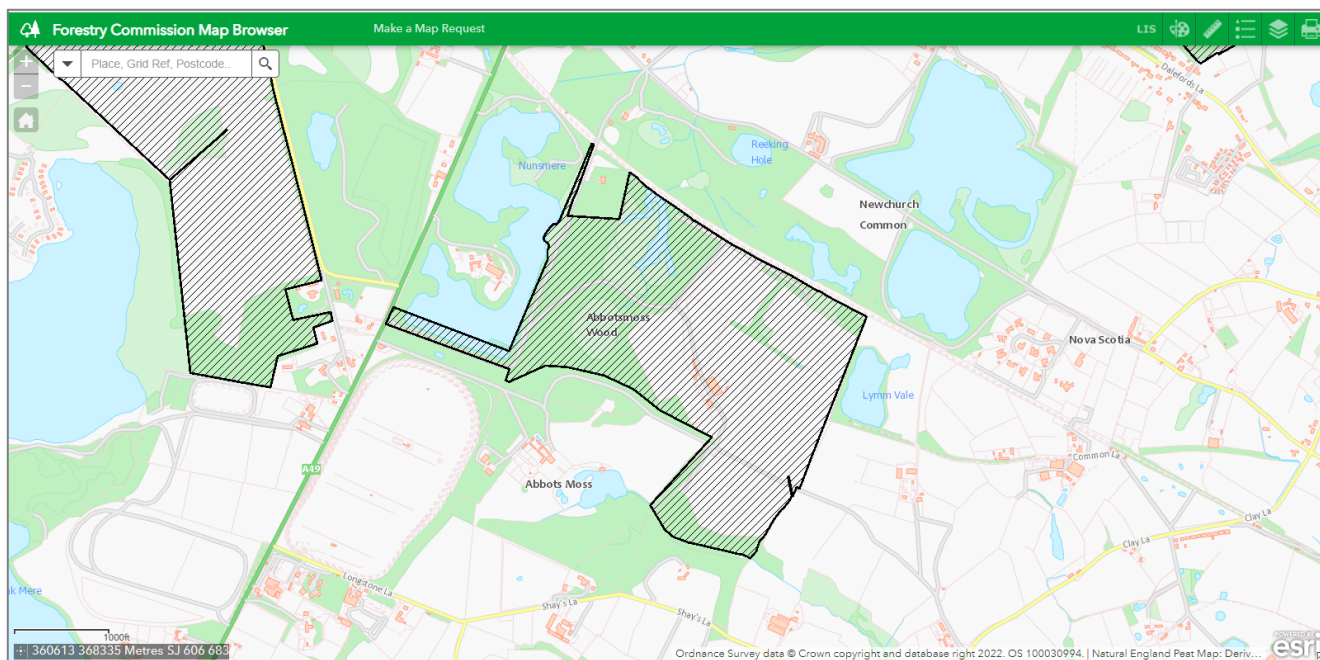


Year	2017	2018	2019	2020	2021
Fires Attended	4	5	2	10	3
Time at Incidents (hh:mm:ss) <sup>1</sup>	04:03:22	06:13:22	01:01:59	06:19:51	02:23:20

<sup>1</sup> Time at Incidents is calculated from the time the first vehicle arrived at the incident to the time the last vehicle in attendance leaves the incident

## Abbotsmoss Wood

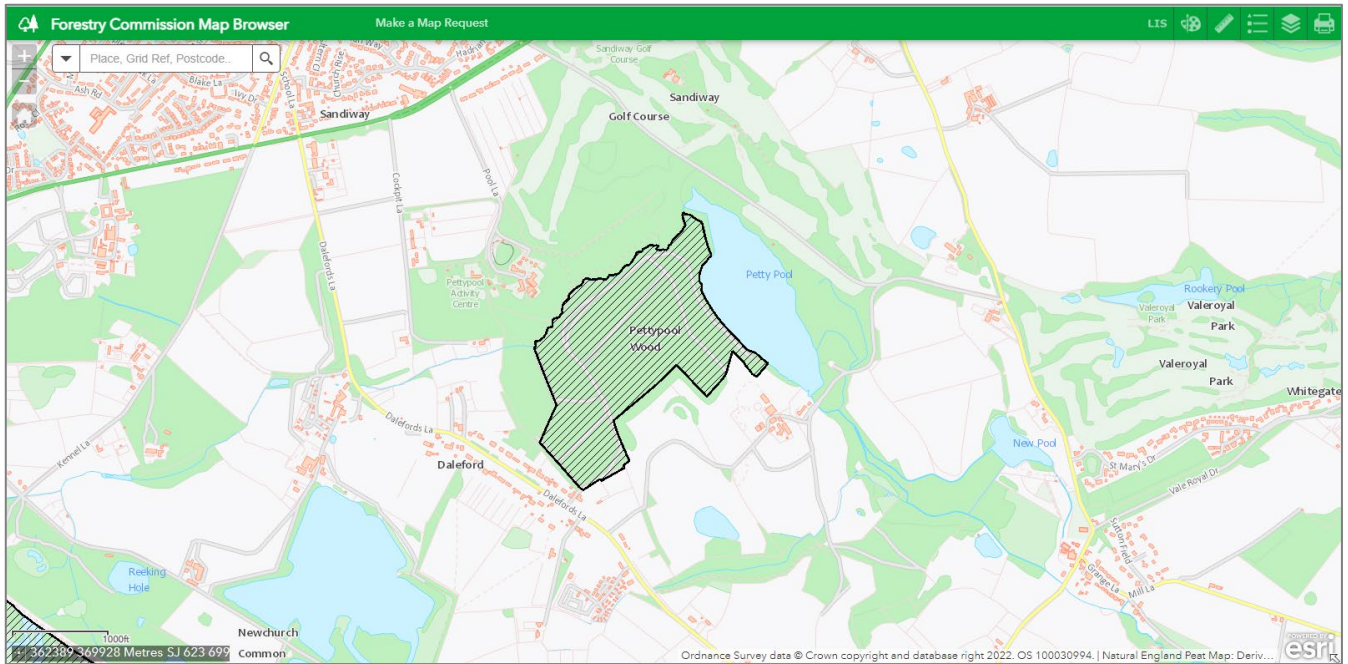
2. <https://www.woodlandtrust.org.uk/visiting-woods/woods/abbotsmoss-wood/>



Year	2017	2018	2019	2020	2021
Fires Attended	0	0	0	2	0
Time at Incidents (hh:mm:ss)	N/A	N/A	N/A	03:17:30	N/A

## Pettypool Wood

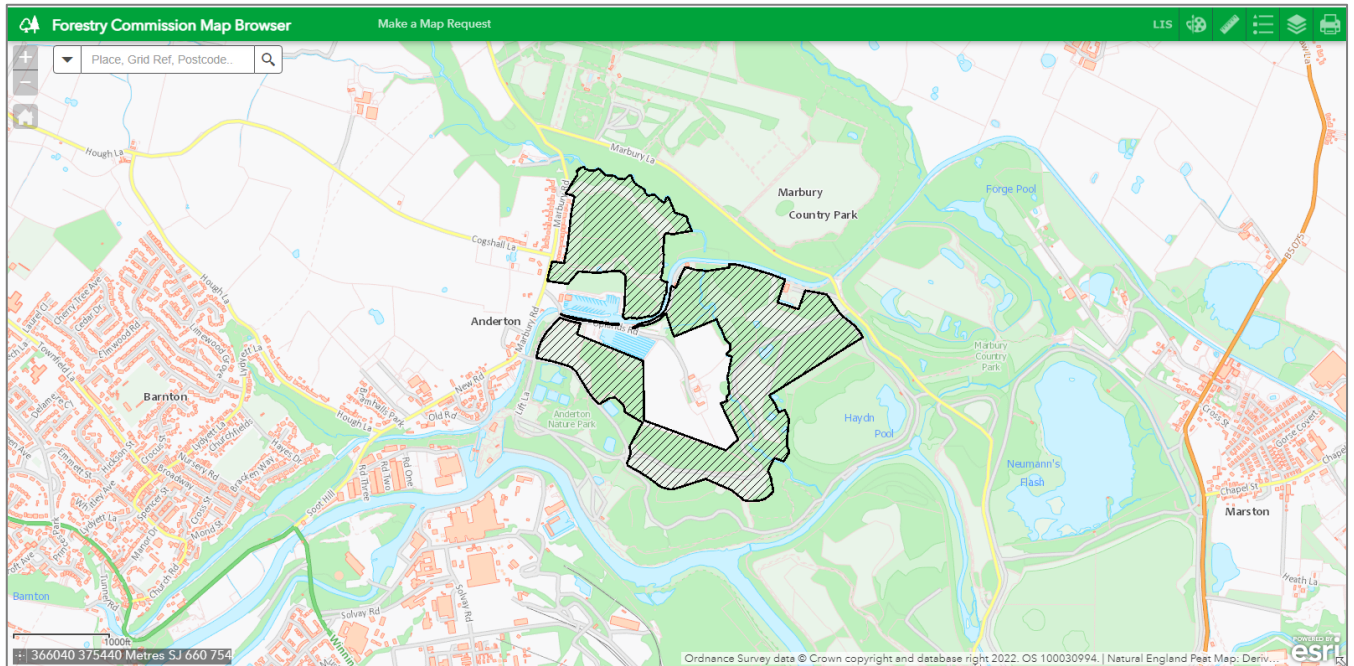
3. <https://www.woodlandtrust.org.uk/visiting-woods/woods/pettypool-wood/>



Year	2017	2018	2019	2020	2021
Fires Attended	1	0	0	0	0
Time at Incidents (hh:mm:ss)	00:43:49	N/A	N/A	N/A	N/A

## Uplands Wood

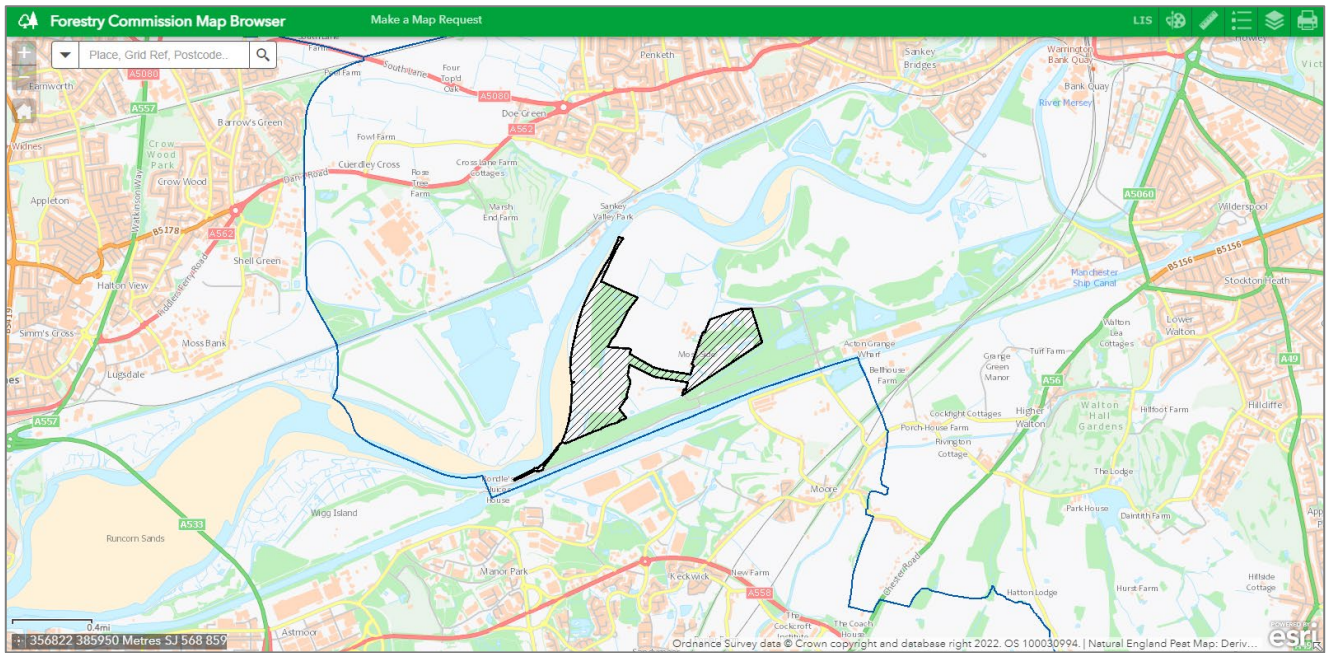
4. <https://www.woodlandtrust.org.uk/visiting-woods/woods/uplands-wood/>



Year	2017	2018	2019	2020	2021
Fires Attended	0	0	0	1	0
Time at Incidents (hh:mm:ss)	N/A	N/A	N/A	00:50:38	N/A

## Upper Moss Side

5. <https://www.woodlandtrust.org.uk/visiting-woods/woods/upper-moss-side/>



No fire incidents were attended at the Upper Moss Side site between 1<sup>st</sup> January 2017 and 31<sup>st</sup> December 2021.